

Fig. 1 Furuno's fishfinder commercialized for the first time in the world.

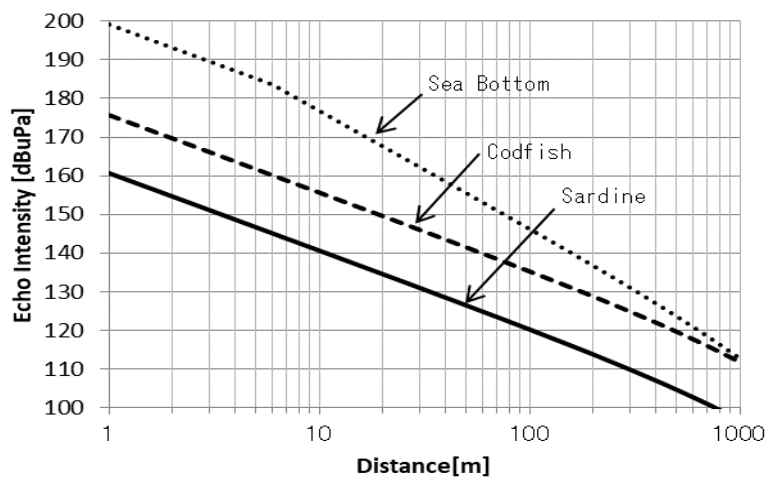


Fig. 2 Intensities of echo signals (pulse width: 1ms) reflected from sea bottom and fish schools of codfishes/sardines.



Fig. 3 A monitor panel in a bridge, in which three fishfinders and two scanning sonars are incorporated among all fourteen monitors.

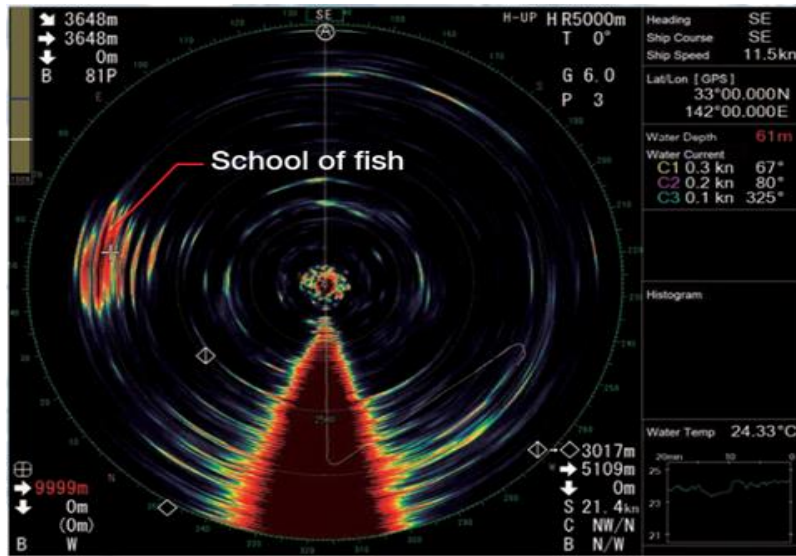


Fig. 4 A picture of fish schools on the scanning sonar



Fig. 5 A picture of fish schools on the fishfinder.
(left; 50kHz, right; 200kHz)