



Europäisches Patentamt
European Patent Office
Office européen des brevets

Publication number:

**0 144 171
B1**

12

EUROPEAN PATENT SPECIFICATION

45 Date of publication of patent specification: **31.01.90**

51 Int. Cl.⁵: **H 01 F 7/22, G 01 R 33/34**

21 Application number: **84307735.5**

22 Date of filing: **09.11.84**

08 Divisional application **87111469** filed on **07.08.87**.

54 **Magnet assembly.**

39 Priority: **11.11.83 GB 8330198**
11.01.84 GB 8400684

43 Date of publication of application:
12.06.85 Bulletin 85/24

45 Publication of the grant of the patent:
31.01.90 Bulletin 90/05

84 Designated Contracting States:
AT BE CH DE FR GB IT LI LU NL SE

56 References cited:
DE-A-2 646 467 GB-A-2 070 254
DE-A-3 123 493 US-A-3 265 939
FR-A-1 416 691 US-A-3 287 630
GB-A-1 285 694 US-A-3 671 902

CRYOGENICS, vol. 19, no. 2, February 1979,
pages 73-76, IPC Business Press; K.J. BEST et
al.: "A multiple purpose 7TNbTi split coil
superconducting magnet system for Mössbauer
spectroscopy and susceptibility measurements
at various temperatures"

73 Proprietor: **OXFORD ADVANCED TECHNOLOGY**
LIMITED
Osney Mead, Oxford, OX2 0DX (GB)

72 Inventor: **Brown, Ian Jesse**
9 Kedleston Rise Bodicote Chase
Banbury Oxon (GB)
Inventor: **Bird, John Maurice**
Stone Leigh Sturt Road
Charlbury Oxon (GB)
Inventor: **Black, David**
Bleinhiem Cottage The Slade
Charlbury Oxford (GB)
Inventor: **McDougall, Ian Leitch**
16 Lees Heights
Charlbury Oxford (GB)

74 Representative: **Skone James, Robert Edmund**
et al
GILL JENNINGS & EVERY 53-64 Chancery Lane
London WC2A 1HN (GB)

58 References cited:
NUCLEAR INSTRUMENTS & METHODS, vol.
150, no. 3, April 1978, pages 377-385; D. COFFEY
et al.: "The 11.7T solenoid of the hyperon bubble
chamber"

Note: Within nine months from the publication of the mention of the grant of the European patent, any person may give notice to the European Patent Office of opposition to the European patent granted. Notice of opposition shall be filed in a written reasoned statement. It shall not be deemed to have been filed until the opposition fee has been paid. (Art. 99(1) European patent convention).

EP 0 144 171 B1

Courier Press, Leamington Spa, England.

EP 0 144 171 B1

Description

The invention relates to a magnet assembly and particularly to a magnet assembly suitable for use in nuclear magnetic resonance (NMR) imaging.

5 In recent years, the technique of NMR imaging has been developed to enable parts of the human body to be imaged. NMR relies on the property of certain atoms in the body to resonate (by precessing) at a particular frequency when exposed to a strong magnetic field. By imposing mutually orthogonal magnetic gradients across the body spatial discrimination can be obtained. An example of NMR apparatus is described in US—A—4021726.

10 In order to carry out these NMR imaging techniques, it is necessary to provide a high strength, uniform magnetic field within a working volume usually defined by the bore of the magnet. A typical field strength for the bore magnetic field is 2.0 T. One of the problems with conventional magnet assemblies for generating such a field is that a large external magnetic field is generated at the same time which is potentially hazardous. It is therefore desirable to shield the magnet assembly to limit this external field.

15 Currently, external magnetic fields are contained by using iron shielding either forming part of the magnet assembly, or within a room housing the magnet assembly such as by placement of iron sheets on the walls of the room.

Iron shielding is cumbersome and expensive. For example, in order to prevent the external magnetic field exceeding 5.0 Gauss beyond a radius of 5 metres requires 3 tonnes of iron for a magnet assembly 20 generating a 1.5 kG bore field, while up to 40 tonnes of iron is required to shield a magnet assembly generating a 20 kG bore field. Clearly, the engineering required to support such large amounts of iron is expensive and furthermore the nearer the iron is to the magnet assembly, the more the bore field itself can be distorted. This is particularly undesirable in the case of magnet assemblies used for NMR imaging where a closely controlled uniform bore field is essential.

25 An alternative method for shielding magnets has been to juxtapose coils of wire around the magnet as for example shown in US—A—3,671,902. In this case, however, the coils used to shield the magnet have produced small, local magnetic fields and this requires complex calculations to determine the field at a particular radius and then to design a coil to provide a suitable shielding field. Furthermore, this prior art arrangement is designed to shield magnets which produce comparatively low strength bore fields in 30 contrast to the field strength with which the present invention is concerned. A further problem for which the prior art does not provide a solution is that it is commonly necessary, particularly with NMR imaging, to change the strength of the bore magnetic field. Such a change will cause changes in the external field and this will require complex modifications to the various shielding coils. For example, it may be necessary not only to change the exciting currents passing through the shielding coils but also the number of turns and 35 positions of the coils relatively to the magnet.

US—A—3333162 also discloses a small scale shielding arrangement. This arrangement provides no further assistance to someone trying to solve the problems outlined above for a number of reasons. Firstly, this arrangement of coils could never be used for NMR work because of rotation of the principal field vector in the bore, therefore the device as described could not be copied or scaled up directly. Secondly the device 40 is dealing with magnetic fields very much less than those necessary for NMR. We estimate that the bore field of the largest coil in the Hz component would be about 460 Gauss while at distances of between 20 and 30 cms the fringe field would in any case be less than the earths field. We require a magnet assembly where preferably the fringe field very close to the surface of the assembly is reduced to something of the order of magnitude of the earths field and a device which is open at the ends for patient access.

45 DE—A—2646467 describes a composite magnet system which can be used for two different types of measurement. These are Mossbauer effect measurements and susceptibility measurements. Different coil configurations are needed for these measurements and the assembly described in this patent specification can be operated in a number of different ways to achieve the different coil configurations. The magnet 50 system has a pair of main superconducting coils which generate a primary field within a bore of the assembly and these are associated with auxiliary coils which can be actuated to generate small regions axially outwardly of the main coils which are shielded from external magnetic effects. This construction is relatively complex to use particularly due to the need for the various coils to be independently operable to allow different coil configurations to be achieved.

JP—A—5290293 describes a superconducting energy storage device having a main coil and a shield 55 coil which are arranged so that their magnetic dipole moments are of equal magnitude but in mutually opposite directions. This document contains no consideration of the interaction between the coils so as to generate a homogeneous magnetic field within the bore of the assembly.

To the extent that this patent is effective in AT, BE, IT, LU, and SE we provide in accordance with the present invention a magnet assembly comprising a first superconducting coil assembly for generating a 60 first magnetic field; and a second superconducting coil assembly for generating a second magnetic field, the second superconducting coil assembly being electrically connected in series with the first superconducting coil assembly, wherein the second superconducting assembly is positioned about the first wherein the axes of the coils of the first and second superconducting coil assemblies are coincident, wherein the assemblies generate in use a resultant uniform magnetic field in a working volume in the bore 65 of the first assembly, the zero order components of each assembly substantially contributing to the

EP 0 144 171 B1

magnitude of the uniform magnetic field, and wherein the second magnetic field opposes the first magnetic field outwardly of the magnet assembly.

EP—A—0138270 describes nuclear magnetic resonance apparatus having two sets of superconducting magnetic coils arranged to reduce the external magnetic field. This European Patent Application was published on the 24th April 1985 and designates CH, DE, FR, GB, and NL.

To the extent that this patent is effective in CH, FR, DE, GB, and NL, we provide in accordance with the present invention a magnet assembly comprising a first superconducting coil assembly for generating a first magnetic field; and a second superconducting coil assembly for generating a second magnetic field, the second superconducting coil assembly being electrically connected in series with the first superconducting coil assembly, wherein the second superconducting assembly is positioned about the first wherein the axes of the coils of the first and second superconducting coil assemblies are coincident, wherein the assemblies generate in use a resultant uniform magnetic field in a working volume in the bore of the first assembly, the zero order components of each assembly substantially contributing to the magnitude of the uniform magnetic field, and wherein the second magnetic field opposes the first magnetic field outwardly of the magnet assembly wherein the first and second superconducting coil assemblies are connected in parallel to a protective resistance.

This invention provides a self-contained magnet assembly which does not require additional external shielding devices and in addition can generate a useful (i.e. high strength), uniform magnetic field in the working volume. As explained above, in the past, although shielding using coils has been proposed, these coils have produced small external magnetic fields whereas with the invention the second superconducting coil assembly not only provides a shielding field but also contributes significantly to the resultant magnetic field in the working volume. The uniformity arises by virtue of balancing to zero the higher order field terms of both coil assemblies. In principle, it is possible to balance the first and second coil assemblies separately so that each provides a uniform field and when these two are superpositioned the result is also uniform. The resultant magnetic field in the working volume is thus due to the difference in zero order terms between the fields generated by the two coil assemblies. This leads to a considerable increase in control of the uniformity of the bore magnetic field.

A further important advantage of the invention is that the two superconducting coil assemblies are electrically connected in series. This means that when the strength of the bore magnetic field is changed by changing the current flowing through the first superconducting coil assembly the second magnetic field will automatically change by an amount sufficient so that the same degree of shielding is achieved. In other words, the shielding system is linear.

Superconducting coil assemblies are used in order to achieve the strength and the high degree of precision of magnetic field which is required for NMR imaging. The superconductive condition of the coils is achieved by cooling the coils to very low temperatures of the order of 4.2 K using conventional cryogenic or refrigeration techniques. The coils are preferably operated in persistent mode in order to avoid field noise.

We have found that the overall size of our new magnet assembly including the cooling apparatus, is only a little greater than for a conventional unshielded magnet.

The self-shielded or self-contained magnet assembly is particularly advantageous in enabling substantial site arrangement and installation costs to be avoided. Furthermore, the shield constituted by the second superconducting coil assembly can be designed and constructed with great accuracy and will not reduce the uniformity of the magnetic field in the working volume. Indeed, the shield field contributes to the control of magnetic field in the working volume. In addition, more shielding is possible than would be practicable with the conventional iron containment methods.

Normally, the direction of electrical current through the second superconducting coil assembly will be opposite to the current direction in the first superconducting coil assembly.

In the simplest form of magnet assembly according to the invention, the first and second coil assemblies each comprise a single coil, the two coils being electrically connected in series.

Preferably, one or both of the first and second coil assemblies comprises a plurality of coaxial coils arranged symmetrically about a mid-plane of the magnet assembly normal to the coil axis.

One of the problems with using two superconducting coil assemblies is that considerable stresses are developed in use. These stresses can be considerably reduced by placing the second superconducting coil assembly in such a way that the field values within the coil windings are generally as for an unscreened magnet. Then the operating forces in the windings are increased only by the increased current necessary to provide the net magnetic field within the working volume.

Typically, where both the first and second assemblies comprise pluralities of coils the two mid-planes will be coincident. This makes it particularly straight forward to obtain uniformity of the resultant magnetic field in the working volume (i.e. the bore of the assembly). In addition the coils of the second superconducting coil assembly will have a larger internal radius than the external radius of the coils of the first superconducting coil assembly. A special feature of using concentric coils is that it is possible to balance orders between the first coil assembly (magnet) and the second coil assembly (shield) so that, if considered independently, the magnet and the shield would not provide uniform fields and the uniformity is only achieved when the two are operated together.

In one example, the first and second superconducting coil assemblies each comprise six

EP 0 144 171 B1

superconducting coils, the coils constituting the first superconducting coil assembly being arranged radially inwardly of the coils constituting the second superconducting coil assembly, and all the coils being arranged coaxially and symmetrically about a common mid-plane normal to the coil axis.

5 The degree of shielding particularly in the axial direction achieved by the magnet assembly described will normally be sufficient for normal practical purposes. In some cases, however, it may be convenient additionally to provide a further shield of magnetic material arranged around at least the first superconducting coil assembly. In particular this will reduce further the radial fringe field. For example this further shield could be positioned around the second superconducting coil assembly or preferably between the first and second coil assemblies. Preferably the further shield is provided adjacent to the coil or coils of 10 the second superconducting coil assembly. This may most conveniently be achieved by constructing a former supporting the second superconducting coil assembly as the further shield.

Conveniently, the further shield is made of iron. This can enable the amount of expensive superconductor in the second coil assembly to be reduced. We believe that a significant reduction can be achieved by using only 6000 kg of iron for a 1.5 T bore field.

15 Further shielding may be achieved, if necessary, by providing additional coil assemblies positioned adjacent to each end of the working volume, the further coil assemblies being arranged to oppose the resultant magnetic field generated by the first and second superconducting coil assemblies at these positions. These further coil assemblies will normally be resistive coils since the field required is relatively small. This also allows the diameters of the coils to be made large without requiring a large cryostat. The 20 further coils could, however, be superconducting and in this case they could be electrically connected in series with the first and second superconducting coil assemblies.

Some examples of magnet assemblies according to the invention and of NMR apparatus incorporating such magnet assemblies will now be described with reference to the accompanying drawings, in which:—

25 Figure 1 is an exploded, partly cut away perspective view of one example of a magnet assembly;

Figure 2 illustrates graphically the positions of the superconducting coils of the magnet assembly shown in Figure 1;

Figure 3 is a circuit diagram illustrating the electrical connections between the superconducting coils illustrated in Figure 2;

30 Figure 4 illustrates the variation of field strength with distance from an origin defined by the intersection of the axis and mid-plane of the magnet assembly for both an unshielded magnet assembly and the assembly shown in Figure 1;

Figure 5 illustrates the coil arrangement for a second example of a magnet assembly;

Figures 6A and 6B are schematic end and side views of a third example of a magnet assembly; and

35 Figure 7 is a block diagram of NMR apparatus incorporating a magnet assembly as shown in Figure 1.

Figure 1 illustrates in exploded and partly cut away form a magnet assembly 1. The magnet assembly 1 comprises an inner, cylindrical former 2 made of a glass fibre epoxy composite defining the working volume of the magnet assembly constituted by a bore 3 having an axis 4. Positioned radially outwardly of the former 2 is a cylindrical, aluminium former 5 coaxial with the axis 4. The former 5 carries three pairs of 40 coils A,A' —C,C' arranged symmetrically about a mid-plane 6 of the assembly normal to the axis 4 (Figure 2). Each of the coils A—C is formed from a superconductive conducting material which typically comprises fine strands of alloy Type II superconductor, a matrix of good normal conductor in which the superconductor strands are embedded in the form of a regular array, and a surface electrical insulation to cope with energisation and fault mode voltages. The position and number of turns of each coil will be described later. Each of the pairs of coils A,A' —C,C' is wound separately, one being positioned radially 45 inwardly of the other. The coils are embedded in a wax composition and then surrounded by a clamping ring (not shown). In addition each pair of coils is positioned between respective pairs of annular ribs 5A, 5B etc. of the former 5. The purpose of the wax composition and the ribs is to prevent significant movement of the windings of the coil in use since any small movement will be accompanied by the generation of a small amount of heat leading to breakdown of the superconductive condition (known as quenching). In view of 50 the close spacing of the coils A—C, the former 5 must be constructed to accommodate large forces between adjacent coils which, in the axial direction, can amount to some 200,000 Kg. In addition, the former 5 must be as light as possible to reduce the overall weight of the magnet assembly and be as near to a right cylinder as possible.

55 A second, aluminium former 7 is mounted radially outwardly of the former 5. The former 7 carries 6 shielding coils D—F (Figure 2) arranged symmetrically about the mid-plane 6 of the magnet assembly in a manner to be described below. The coils D—F are mounted between respective pairs of ribs 7F, 7E of the former 7 in a way similar to the coils A,A' —C,C'. Clamping rings (not shown) and wax are also used to reduce movement of the coil windings. The clamping rings are particularly important because 60 counter-running currents in the two sets of coils cause very large radial forces to develop.

In order that the windings of the coils A—F can achieve their superconductive condition it is necessary to cool the windings to about 4.2 K. This is the boiling point of helium and thus the two formers 5, 7 are positioned within a helium can be defined by an outer cylindrical wall 8 and an inner wall having a central 65 cylindrical portion 9 and a pair of radially outer, cylindrical portions 10 (only one of which is visible in Figure 1). The portions 9, 10 are integrally connected by annular web portions 11. The helium can is closed by a

EP 0 144 171 B1

pair of ring members 12. The wall 8, portions 9, 10, 11 and ring members 12 are all made of stainless steel. Liquid helium is supplied to the helium can via an inlet 13 mounted in a turret 14.

5 Cylindrical, aluminium radiation shields 15, 15' are mounted coaxially, radially outwardly and inwardly respectively about the helium can to define an evacuated space 16 between the shields 15, 15' and the helium can. The shields 15, 15' are cooled by contact with helium through the agency of a heat exchanger (not shown) in the turret 14 which extracts heat from the radiation shields 15, 15' and passes it to the cold helium gas that has been boiled from the helium can.

10 Further aluminium radiation shields 17, 17' are mounted coaxially, radially outwardly and inwardly respectively about the shields 15, 15' to define an evacuated space 18. In use, liquid nitrogen is supplied to a cooling tube (not shown) wound around the shields 17, 17' and connected to blank ports 19 of the turret 14. Finally, a cylindrical, stainless steel outer casing 20 is mounted coaxially about the shield 17 to define a vacuum space 21. Pairs of aluminium end plates 22—24 are provided to close the ends of the spaces 16, 17, 21 while a pair of end rings 25 are mounted to the inner shield 17'. Only one of each pair of plates and rings is shown in Figure 1.

15 To minimise the heat load, the various shields are supported by a system of glass rods (not shown) mounted in corresponding attachment plates. These rods when configured as a three dimensional array of struts will support a 4000 kilogram magnet at the expense of a heat leak of no more than 0.04 watts.

In use, the helium can is filled with liquid helium which will be at 4.2 K. As the liquid helium boils, the gas produced will pass into the heat exchanger in the turret 14 which will cool the shields 15, 15' to a temperature of about 40°K. The boiling of the liquid helium maintains the wall of the helium can at 42°K. 20 Liquid nitrogen being present in the cooling tubes (not shown) maintains the shields 17, 17' at a temperature of about 77 K. This jacket of liquid nitrogen together with the vacuum contained within the spaces 16, 18, 21 help to maintain the temperature of the helium can at 4.2 K.

25 The spaces 16, 18, 21 are connected through valves (not shown) within the turret 14 to the atmosphere to enable the spaces to be evacuated.

The arrangement of the coils A—F may best be understood by considering the field at the centre of a set of circular, coplanar coils arranged on the surface of a cylinder. This field is proportional to the radius for each ampere of current through the coils. If the bore field is B_0 and the field of a point outside the magnet assembly is B_r , then for the magnet (M) constituted by the inner coils A,A' —C,C' and the 30 antimagnet (A) constituted by the coils D—F we have:—

$$B_0^M/B_r^M=R_1$$

$$B_0^A/B_r^A=R_2$$

35 For complete cancellation of the external field at a given point, we require $B_r^A=-B_r^M$. The total effective magnetic field in a bore due to both arrays of coils is thus:—

$$B_0^M+(-B_0^A)=B_0^M(1-R_2/R_1)$$

40 Thus a fully screened system requires more current than an unscreened magnet assembly for a fixed bore field. The effect of this increase in current is to increase the forces to which the conductor is subject in the coil winding and this is dealt with in the manner previously described.

45 The radial and axial positions of the coils A—F are chosen so that the field within the bore 3 is at a selected value and is substantially uniform throughout the bore. In addition, the coil sizes and positions are such that the field strength externally of the magnet assembly does not exceed a specified value. The position of each coil A—F can be characterised by four measurements. These are indicated in Figure 2. These comprise the inner radius a_1 , the outer radius a_2 , the distance parallel to the axis 4 of the nearest part of the coil from the mid-plane 6 (b_1) and the furthest distance from the mid-plane 6 (b_2). It will be 50 appreciated from Figure 2 that the coils A—F all have a rectangular cross-section.

Table 1 below illustrates how for coils of different diameter the bore field and fringe field changes. In each case, the coil is assumed to have 1,432,664 amp turns with a radius of a cms. The bore field is B_0 while the fringe field at a radius of 400 cms in the mid-plane of the coil is designated B^r while the fringe field at a distance of 400 cms from the centre of the coil along the axis of the coil is designated B^z . The fringe fields 55 are represented by their z components i.e. the components parallel with the axis of the coils.

60

65

EP 0 144 171 B1

TABLE 1

	a cm	B ₀ Gauss	B ^r Gauss	B ^z Gauss
5	40	22504	12.89	21.49
	50	17994	21.49	34.38
	60	15000	31.52	48.71
10	70	12865	45.85	65.90
	80	11250	61.61	84.53
15	90	10000	80.22	106.01
	100	9001	104.6	127.5

20 An inner coil is now chosen, for example a coil with a radius of 60 cms, and an outer coil is then selected which is as close as possible radially to the inner coil but which has a slightly reduced strength so that the fringe fields match. For example, if the main magnet is taken to have a radius of 60 cms it will produce a bore field of 15000 Gauss and a mean fringe field of 40.1 Gauss (see Table 1). A shield coil having a radius of 80 cms will by itself produce a bore field of 11250 Gauss and a mean fringe field of 73.1 Gauss.

25 The shield coil will be run in the opposite sense to the main coil. In order to balance the fringe fields so that they cancel it is necessary to reduce the number of amp turns in the shield coil by 40.1/73.1 i.e. to 786,560 amp turns. The shield coil will thus then produce a bore field of 6176 Gauss and a mean fringe field of 40.1 Gauss. Thus, the net bore field will be 15000-6176=8823 Gauss and a net mean fringe field of zero.

30 An example of the dimensions of a set of coils suitable for use with the magnet assembly shown in Figure 1 is given in Table 2 below.

TABLE 2

		a ₁	a ₂	No turns per sq cm of cross section	b ₁	b ₂	Length wire per coil pair (m)
35							
40	A)	62.00	66.00	19.6	63.90	86.48	14351
	A')	66.03	68.73	34.4	63.90	86.48	17706
45	Inner B)	65.50	66.88	19.2	24.37	40.97	3652
	Coils B')	66.88	68.63	34.4	24.37	40.97	8523
	C)	65.76	67.14	19.2	3.52	16.60	2889
50	C')	67.14	68.73	34.4	3.52	16.60	6061
	Outer D	98.38	101.62	-19.3	12.46	18.52	4775
	Coils E	98.38	101.62	-19.3	46.85	55.03	6447
55	F	98.38	101.62	-19.3	104.77	126.91	17430

60 In this table, all distances apart from the length of wire are in centimetres. The minus signs before the number of turns of the coils D—F indicate that current passes through these coils in the opposite direction to that of the other coils.

This particular arrangement can produce a 2.0 T bore field having a very high homogeneity and a field stability of <0.1 ppm per hour. A field of 2.0 T is obtained using a current of 429 Amperes.

65 The electrical connections between the coils is illustrated in Figure 3. A power supply 26 is connected via a switch 27 and a protection resistor 28 of 0.5 ohms in parallel with the coils D—F. Each set of coils D—F

EP 0 144 171 B1

is connected in series with the coils A,A'—C,C'. Additional 0.5 ohm protection resistors 29, 30 are positioned in parallel with all the coils A,A'—C,C' and the coils B,B'—C,C' respectively.

The effectiveness of the outer set of coils D—F on shielding the magnet assembly can be seen from Figure 4. With an unshielded magnet producing a bore field of 15 kG, an external field having a strength of 10 G will be experienced at a distance of 10 metres from the mid-plane 6 of the magnet assembly and up to 7.5 metres from the axis 4 of the magnet assembly as is illustrated by a line 31 in Figure 4. A dashed line 32 indicates the position where the external field strength has dropped to 5 G. In contrast to this, lines 33, 34 illustrate the positions where the external field strength has dropped to 10 G and 5 G respectively with the magnet assembly shown in Figures 1 and 2.

Figure 5 illustrates an alternative coil geometry in which the inner coils A,A'—C,C' have been replaced by two pairs of coils 35, 36. Each coil 35 has 4098 turns and each coil 36 has 2000 turns. The coils D—F have been replaced by a single solenoid 37 having 4400 turns positioned 100 cms from the axis 4 and extending to 64 cms on either side of the mid-plane 6.

In general, the assembly shown in the previous figures is sufficiently shielded but in some cases it may be desirable to provide some extra shielding. One way in which this may be achieved is illustrated in Figures 6A and 6B. In this example, the magnet assembly 1 which is the same as that shown in Figure 1, is surrounded by four rectangular iron plates 38 positioned parallel with the axis 4. A pair of resistive coils 39 are positioned transversely to the axis 4 at positions spaced from the ends of the bore 3. Typically, each coil 39 will have a diameter of three metres, have 50 turns and be powered from separate power supplies (not shown) by a current of between 100 and 150 A.

This arrangement results in more improved shielding without affecting the bore field significantly. Furthermore, where the magnet assembly is to be used in NMR imaging apparatus the coils 39 do not impede access to the bore 3 for a patient.

An improved form of assembly to that shown in Figures 6A and 6B may be obtained by constructing the former 7 from iron. In this way, the iron plates 38 of Figure 6A are incorporated into the magnet assembly 1 thus producing a very compact construction in which the shielding effect of the coils D—F is considerably enhanced.

One of the most important applications of the magnet assembly described is in NMR imaging apparatus. Figure 7 illustrates in block diagram form such apparatus which is otherwise of a conventional form. The apparatus comprises the magnet system 1 incorporating a power supply (not shown). The inlets to the helium can and the space 18 are connected to suitable supplies whose operation is controlled by a cryogenic control system 40 of a conventional type.

The former 2 carries a number of gradient coils so that different gradients of magnetic field can be set up through the bore 3 to enable NMR imaging experiments to be carried out. These gradient coils are not superconducting coils and are also of a conventional form. They are driven by respective power drivers 41 controlled from control logic 42 via a waveform generator 43. Coils (not shown) for generating and receiving RF energy are also mounted on the former 2, the RF transmitter being connected to an amplifier 44 which is connected to a spectrometer 45. The RF receiver which detects the NMR signal is also connected to the spectrometer 45. The generation of RF pulses is controlled by the control logic 42 which is connected to the spectrometer 45. NMR data from the spectrometer 45 passes to a data acquisition system 46 which is controlled by the control logic 42. Data from the system 46 then passes to processing logic 47.

The overall control of the system is provided by a computer 48 which is connected via a conventional RS 232 interface to an operator input station 49. Information for the computer is stored in a disc drive 50 while the results of the imaging experiments are passed by the computer to a display system 51 which can display "slices" through the patient's body on a monitor 52.

In use, a patient lies inside the bore 3 extending along the axis 4 of the assembly which is conventionally termed the Z direction.

Table 3 below illustrates typical dimensions of a conventional unshielded magnet assembly and the magnet assembly shown in Figure 1 for comparison. The figures relate to a 1.5 T bore field with a 1 metre diameter bore.

TABLE 3

	Axial length (metres)	Diameter (metres)	Height M	Mass Kg
Unshielded	2.1	2.2	2.8	7500
Shielded	2.3	2.3	2.9	8900

Claims for the Contracting States: AT, BE, IT, LU, SE

1. A magnet assembly (1) comprising a first superconducting coil assembly (A,A'—C,C') for generating a first magnetic field; and a second superconducting coil assembly (D—F) for generating a second

EP 0 144 171 B1

magnetic field, the second superconducting coil assembly being electrically connected in series with the first superconducting coil assembly, wherein the second superconducting assembly is positioned about the first wherein the axes of the coils of the first and second superconducting coil assemblies are coincident, wherein the assemblies generate in use a resultant uniform magnetic field in a working volume in the bore (3) of the first assembly, the zero order components of each assembly substantially contributing to the magnitude of the uniform magnetic field, and wherein the second magnetic field opposes the first magnetic field outwardly of the magnet assembly (1).

5 2. An assembly according to claim 1, wherein the first superconducting coil assembly comprises a plurality of coaxial coils (A,A'—C,C') arranged symmetrically about a mid-plane (6) of the magnet assembly (1) normal to the axis (4) of the coils.

10 3. An assembly according to claim 1 or claim 2, wherein the second superconducting coil assembly comprises a plurality of coaxial coils (D—F) arranged symmetrically about a mid-plane (6) of the magnet assembly (1) normal to the axis (4) of the coils.

15 4. An assembly according to any of the preceding claims, further comprising a shield (38) of magnetic material arranged around at least the first superconducting coil assembly.

5. An assembly according to claim 4, wherein the shield is constituted by a former (7) supporting the second superconducting coil assembly.

6. An assembly according to claim 4 or claim 5, wherein the shield (38, 7) is made of iron.

20 7. An assembly according to any of the preceding claims, further comprising a pair of additional resistive coils (39) positioned adjacent to each end of the working volume (3) and arranged to oppose the resultant magnet field generated by the first and second coil assemblies at these positions.

8. An assembly according to any of the preceding claims, wherein the first and second superconducting coil assemblies are connected in parallel to a protection circuit (28—30).

25 9. An assembly according to any of the preceding claims, wherein the first and second coil assemblies only generate a uniform magnetic field within the working volume (3) when operated together.

Claims for the Contracting States: CH, FR, DE, GB, NL

1. A magnet assembly (1) comprising a first superconducting coil assembly (A,A'—C,C') for generating a first magnet field; and a second superconducting coil assembly (D—F) for generating a second magnetic field, the second superconducting coil assembly being electrically connected in series with the first superconducting coil assembly, wherein the second superconducting assembly is positioned about the first wherein the axes of the coils of the first and second superconducting coil assemblies are coincident, wherein the assemblies generate in use a resultant uniform magnetic field in a working volume in the bore (3) of the first assembly, the zero order components of each assembly substantially contributing to the magnitude of the uniform magnetic field, and wherein the second magnetic field opposes the first magnetic field outwardly of the magnet assembly (1), wherein the first and second superconducting coil assemblies are connected in parallel to a protective resistance (28—30).

2. An assembly according to claim 1, wherein the first superconducting coil assembly comprises a plurality of coaxial coils (A,A'—C,C') arranged symmetrically about a mid-plane (6) of the magnet assembly (1) normal to the axis (4) of the coils.

3. An assembly according to claim 1 or claim 2, wherein the second superconducting coil assembly comprises a plurality of coaxial coils (D—F) arranged symmetrically about a mid-plane (6) of the magnet assembly (1) normal to the axis (4) of the coils.

4. An assembly according to any of the preceding claims, further comprising a shield (38) of magnetic material arranged around at least the first superconducting coil assembly.

5. An assembly according to claim 4, wherein the shield is constituted by a former (7) supporting the second superconducting coil assembly.

6. An assembly according to claim 4 or claim 5, wherein the shield (38, 7) is made of iron.

50 7. An assembly according to any of the preceding claims, further comprising a pair of additional resistive coils (39) positioned adjacent to each end of the working volume (3) and arranged to oppose the resultant magnet field generated by the first and second coil assemblies at these positions.

8. An assembly according to any of the preceding claims, wherein the first and second coil assemblies only generate a uniform magnetic field wherein the working volume (3) when operated together.

Patentansprüche für die Vertragsstaaten: AT, BE, IT, LU, SE

1. Magnetanordnung (1) mit einer ersten supraleitenden Spulenanordnung (A,A'—C,C') zur Erzeugung eines ersten Magnetfeldes; und einer zweiten supraleitenden Spulenanordnung (D—F) zur Erzeugung eines zweiten Magnetfeldes, wobei die zweite supraleitende Spulenanordnung mit der ersten supraleitenden Spulenanordnung elektrisch in Reihe geschaltet ist, wobei die zweite supraleitende Spulenanordnung um die erste herum angeordnet ist, wobei die Achse der Spulen der ersten und der zweiten supraleitenden Spulenanordnung koinzidieren, wobei die Anordnungen im Betrieb ein resultierendes einheitliches Magnetfeld in einem Arbeitsraum in der Bohrung (3) der ersten Anordnung erzeugen, wobei die Komponenten nullter Ordnung jeder Anordnung zur Größe des einheitlichen Magnetfeldes

EP 0 144 171 B1

wesentlichen beitragen, und wobei das zweite Magnetfeld dem ersten Magnetfeld außerhalb der Magnetanordnung (1) entgegenwirkt.

2. Anordnung nach Anspruch 1, bei der die erste supraleitenden Spulenordnung mehrere koaxiale Spulen (A,A'—C,C') aufweist, die symmetrisch um eine normal zur Achse (4) der Spulen stehende
5 Mittelebene (6) der Magnetanordnung (1) angeordnet sind.

3. Anordnung nach Anspruch 1 oder 2, bei der die zweite supraleitende Spulenordnung mehrere koaxiale Spulen (D—F) aufweist, die symmetrisch um eine normal zur Achse (4) der Spulen stehende Mittelebene (6) der Magnetanordnung (1) angeordnet sind.

4. Anordnung nach einem der vorhergehenden Ansprüche, die ferner eine Abschirmung (38) aus
10 Magnetmaterial aufweist, welche zumindest um die erste supraleitende Spulenordnung herum angeordnet ist.

5. Anordnung nach Anspruch 4, bei der die Abschirmung durch eine Hülse (7) gebildet ist, welche die zweite supraleitende Spulenordnung abstützt.

6. Anordnung nach Anspruch 4 oder 5, bei der die Abschirmung (38, 7) aus Eisen besteht.

15 7. Anordnung nach einem der vorhergehenden Ansprüche, die ferner ein Paar zusätzlicher Widerstandsspulen (39) aufweist, die nahe jedem Ende des Arbeitsraumes (3) angeordnet und so ausgebildet sind, daß sie dem resultierenden, von der ersten und der zweiten Spulenordnung an diesen Stellen gebildeten Magnetfeld entgegenwirken.

8. Anordnung nach einem der vorhergehenden Ansprüche, bei welcher die erste und die zweite
20 supraleitende Spulenordnung zu einer Schutzschaltung (38—30) parallel geschaltet sind.

9. Anordnung nach einem der vorhergehenden Ansprüche, bei der die erste und die zweiten supraleitende Spulenordnung innerhalb des Arbeitsraumes (3) nur im gemeinsamen Betrieb ein einheitliches Magnetfeld erzeugen.

25 Patentansprüche für die Vertragsstaaten: CH, FR, DE, GB, NL

1. Magnetanordnung (1) mit einer ersten supraleitenden Spulenordnung (A,A'—C,C') zur Erzeugung eines ersten Magnetfeldes; und einer zweiten supraleitenden Spulenordnung (D—F) zur Erzeugung eines zweiten Magnetfeldes, wobei die zweite supraleitende Spulenordnung mit der ersten supra-
30 leitenden Spulenordnung elektrisch in Reihe geschaltet ist, wobei die zweite supraleitende Spulenordnung um die erste herum angeordnet ist, wobei die Achsen der Spulen der ersten und der zweiten supraleitenden Spulenordnung koinzidieren, wobei die Anordnungen im Betrieb ein resultierendes einheitliches Magnetfeld in einem Arbeitsraum in der Bohrung (3) der ersten Anordnung erzeugen, wobei die Komponenten nullter Ordnung jeder Anordnung zur Größe des einheitlichen Magnetfeldes wesentlich
35 beitragen, wobei das zweite Magnetfeld dem ersten Magnetfeld außerhalb der Magnetanordnung (1) entgegenwirkt, und wobei die erste und die zweite Spulenordnung zu einem Schutzwiderstand (28—30) parallel geschaltet sind.

2. Anordnung nach Anspruch 1, bei der die erste supraleitende Spulenordnung mehrere koaxiale Spulen (A,A'—C,C') aufweist, die symmetrisch um eine normal zur Achse (4) der Spulen stehende
40 Mittelebene (6) der Magnetanordnung (1) angeordnet sind.

3. Anordnung nach Anspruch 1 oder 2, bei der die zweite supraleitende Spulenordnung mehrere koaxiale Spulen (D—F) aufweist, die symmetrisch um eine normal zur Achse (4) der Spulen stehende Mittelebene (6) der Magnetanordnung (1) angeordnet sind.

4. Anordnung nach einem der vorhergehenden Ansprüche, die ferner eine Abschirmung (38) aus
45 Magnetmaterial aufweist, welche zumindest um die erste supraleitende Spulenordnung herum angeordnet ist.

5. Anordnung nach Anspruch 4, bei der die Abschirmung durch eine Hülse (7) gebildet ist, welche die zweite supraleitende Spulenordnung abstützt.

6. Anordnung nach Anspruch 4 oder 5, bei der die Abschirmung (38, 7) aus Eisen besteht.

50 7. Anordnung nach einem der vorhergehenden Ansprüche, die ferner ein Paar zusätzlicher Widerstandsspulen (39) aufweist, die nahe jedem Ende des Arbeitsraumes (3) angeordnet und so ausgebildet sind, daß sie dem resultierenden, von der ersten und der zweiten Spulenordnung an diesen Stellen gebildeten Magnetfeld entgegenwirken.

8. Anordnung nach einem der vorhergehenden Ansprüche, bei der die erste und die zweite
55 supraleitende Spulenordnung innerhalb des Arbeitsraumes (3) nur im gemeinsamen Betrieb ein einheitliches Magnetfeld erzeugen.

Revendications pour les Etats Contractants: AT, BE, IT, LU, SE

60 1. Montage magnétique (1) comprenant un premier montage de bobines supraconductrices (A,A' à C,C') générant un premier champ magnétique, et un second montage de bobines supraconductrices (D à F) générant un second champ magnétique, le second montage de bobines supraconductrices étant monté électriquement en série avec le premier montage de bobines supraconductrices, caractérisé en ce que le second montage supraconducteur est placé autour du premier, les axes des bobines du premier et du
65 second montage de bobines supraconductrices coïncidant, en ce que les montages produisent en service

EP 0 144 171 B1

un champ magnétique résultant uniforme dans un volume de travail de l'alésage (3) du premier montage, les composantes d'ordre zéro de chaque montage contribuant substantiellement à l'amplitude du champ magnétique uniforme, et en ce que le second champ magnétique s'oppose au premier champ magnétique à l'extérieur du montage magnétique (1).

5 2. Montage selon la revendication 1, caractérisé en ce que le premier montage de bobines supraconductrices comprend une pluralité de bobines coaxiales (A,A', à C,C') disposées symétriquement par rapport à un plan médian (6) du montage magnétique (1) normal à l'axe (4) des bobines.

3. Montage selon la revendication 1 ou 2, caractérisé en ce que le second montage de bobines supraconductrices comprend une pluralité de bobines coaxiales (D à F) disposées symétriquement par rapport à un plan médian (6) du montage magnétique (1) normal à l'axe (4) des bobines.

10 4. Montage selon l'une des revendications précédentes, caractérisé en ce qu'il comprend en outre un blindage (38) de matériau magnétique disposé autour d'au moins le premier montage de bobines supraconductrices.

5. Montage selon la revendication 4, caractérisé en ce que le blindage est constitué d'un gabarit (7) supportant le second montage de bobines supraconductrices.

15 6. Montage selon la revendication 4 ou 5, caractérisé en ce que le blindage est (38, 7) est fabriqué en fer.

7. Montage selon l'une quelconque des revendications précédentes, caractérisé en ce qu'il comprend en outre une paire de bobines résistives (39) supplémentaires positionnées à chaque extrémité du volume de travail (3) et disposées de manière à s'opposer à cet endroit au champ magnétique résultant produit par le premier et le second montage de bobines supraconductrices.

20 8. Montage selon l'une quelconque des revendications précédentes, caractérisé en ce que le premier et le second montages de bobines supraconductrices sont montés en parallèle avec un circuit de protection (28 à 30).

25 9. Montage selon l'une quelconque des revendications précédentes, caractérisé en ce que le premier et le second montages de bobines supraconductrices ne produisent un champ magnétique uniforme dans le volume de travail (3) que lorsqu'ils fonctionnent ensemble.

Revendications pour les Etats Contractants: CH, FR, DE, GB, NL

30 1. Montage magnétique (1) comprenant un premier montage de bobines supraconductrices (A,A' à C, C') générant un premier champ magnétique, et un second montage de bobines supraconductrices (D à F) générant un second champ magnétique, le second montage de bobines supraconductrices étant monté électriquement en série avec le premier montage de bobines supraconductrices, caractérisé en ce que le second montage supraconducteur est placé autour du premier, les axes des bobines du premier et du second montage de bobines supraconductrices coïncidant, en ce que les montages produisent en service un champ magnétique résultant uniforme dans un volume de travail de l'alésage (3) du premier montage, les composantes d'ordre zéro de chaque montage contribuant substantiellement à l'amplitude du champ magnétique uniforme, en ce que le second champ magnétique s'oppose au premier champ magnétique à l'extérieur du montage magnétique (1), et en ce que le premier et le second montages de bobines supraconductrices sont montés en parallèle avec une résistance de protection (28 à 30).

35 2. Montage selon la revendication 1, caractérisé en ce que le premier montage de bobines supraconductrices comprend une pluralité de bobines coaxiales (A,A', à C, C') disposées symétriquement par rapport à un plan médian (6) du montage magnétique (1) normal à l'axe (4) des bobines.

45 3. Montage selon la revendication 1 ou 2, caractérisé en ce que le second montage de bobines supraconductrices comprend une pluralité de bobines coaxiales (D à F) disposées symétriquement par rapport à un plan médian (6) du montage magnétique (1) normal à l'axe (4) des bobines.

4. Montage selon l'une des revendications précédentes, caractérisé en ce qu'il comprend en outre un blindage (38) de matériau magnétique disposé autour d'au moins le premier montage de bobines supraconductrices.

50 5. Montage selon la revendication 4, caractérisé en ce que le blindage est constitué d'un gabarit (7) supportant le second montage de bobines supraconductrices.

6. Montage selon la revendication 4 ou 5, caractérisé en ce que le blindage est (38, 7) est fabriqué en fer.

55 7. Montage selon l'une quelconque des revendications précédentes, caractérisé en ce qu'il comprend en outre une paire de bobines résistives (39) supplémentaires positionnées à côté de chaque extrémité du volume de travail (3) et disposées de manière à s'opposer à cet endroit au champ magnétique résultant produit par le premier et le second montage de bobines supraconductrices.

60 8. Montage selon l'une quelconque des revendications précédentes, caractérisé en ce que le premier et le second montages de bobines supraconductrices ne produisent un champ magnétique uniforme dans le volume de travail (3) que lorsqu'ils fonctionnent ensemble.

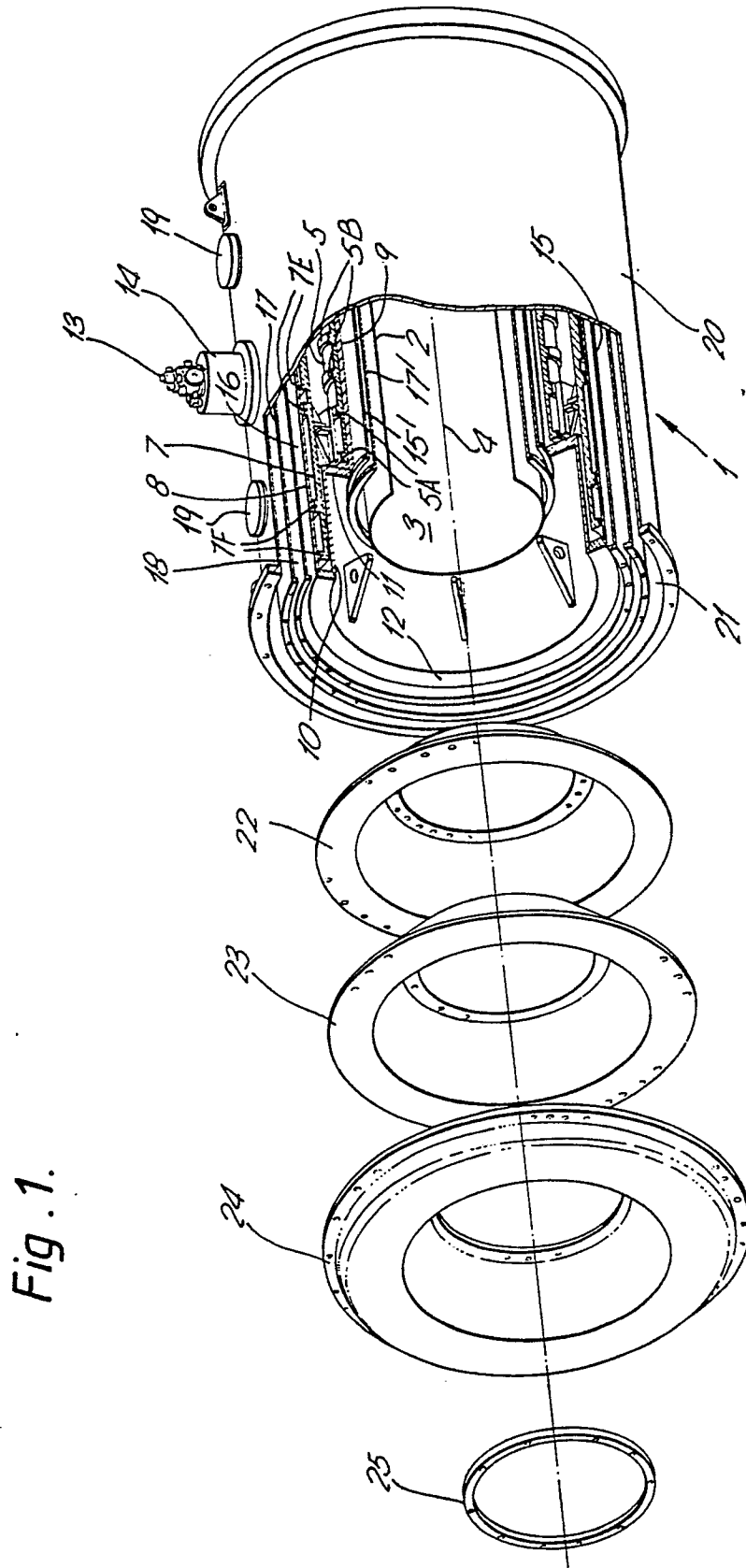


Fig. 1.

Fig. 2.

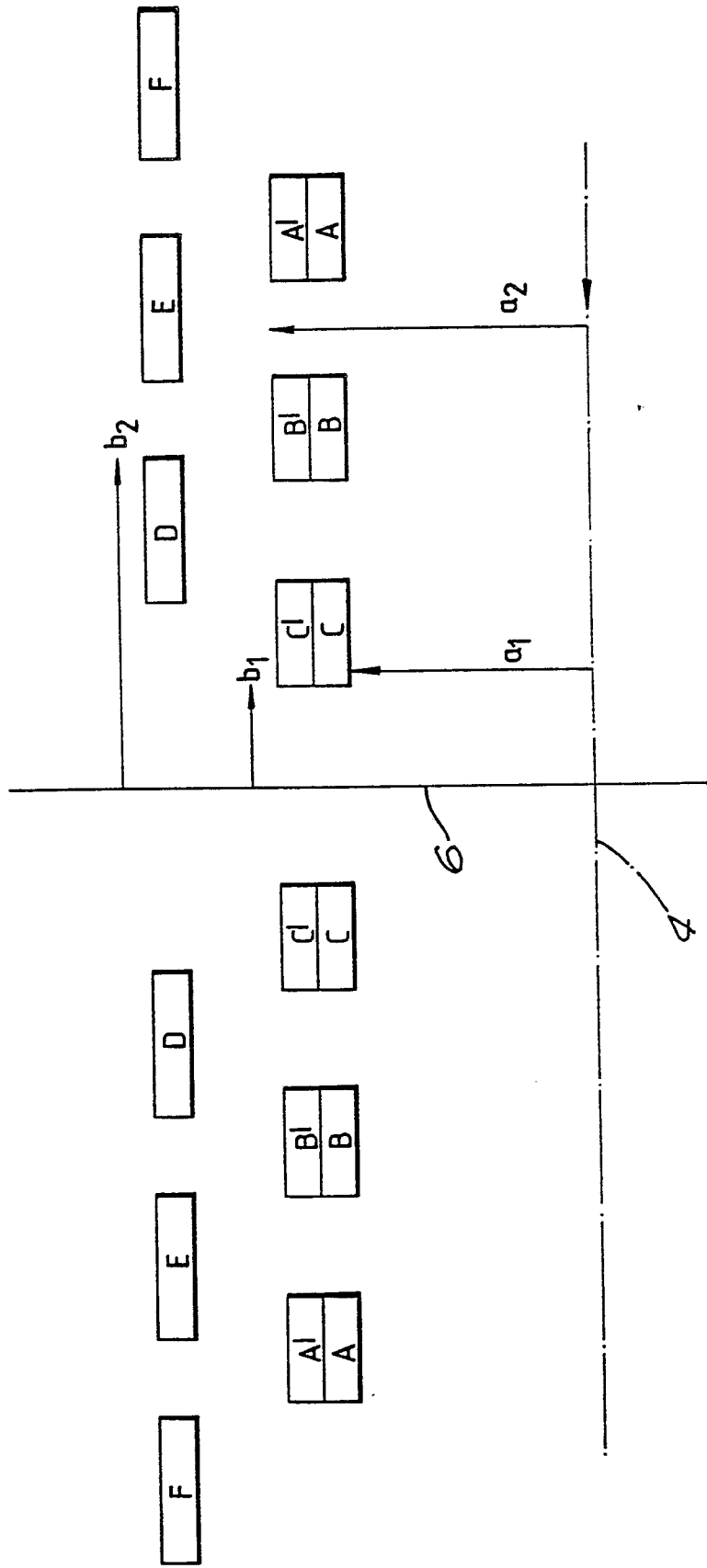


Fig. 3.

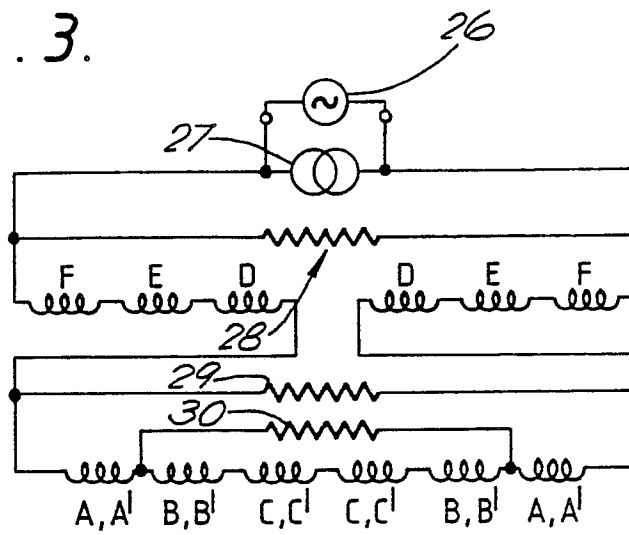


Fig. 4.

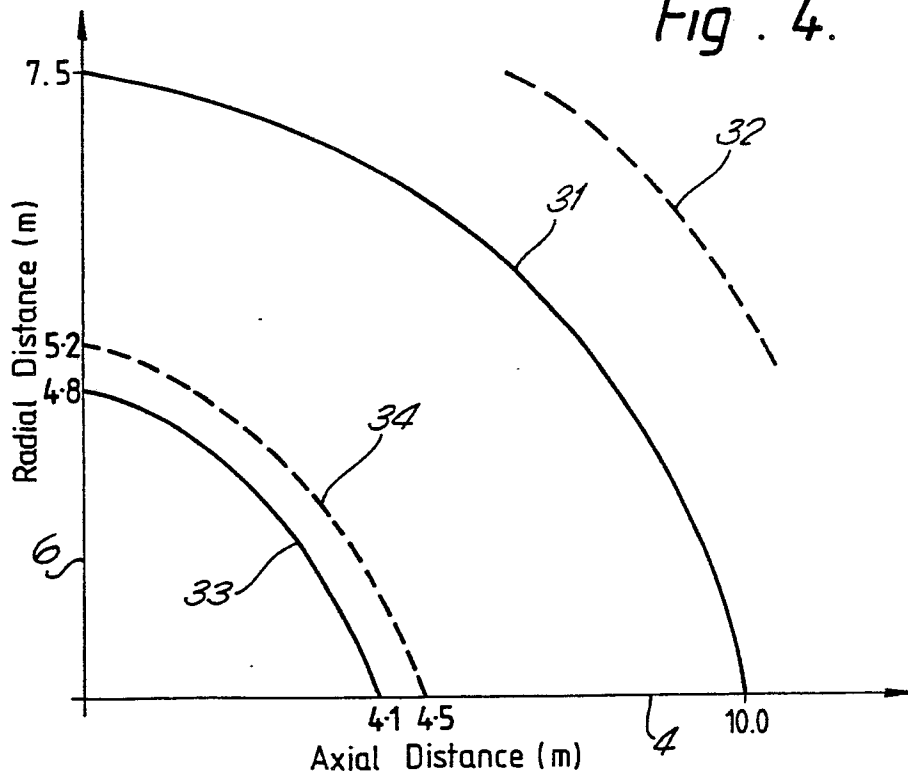


Fig. 5.

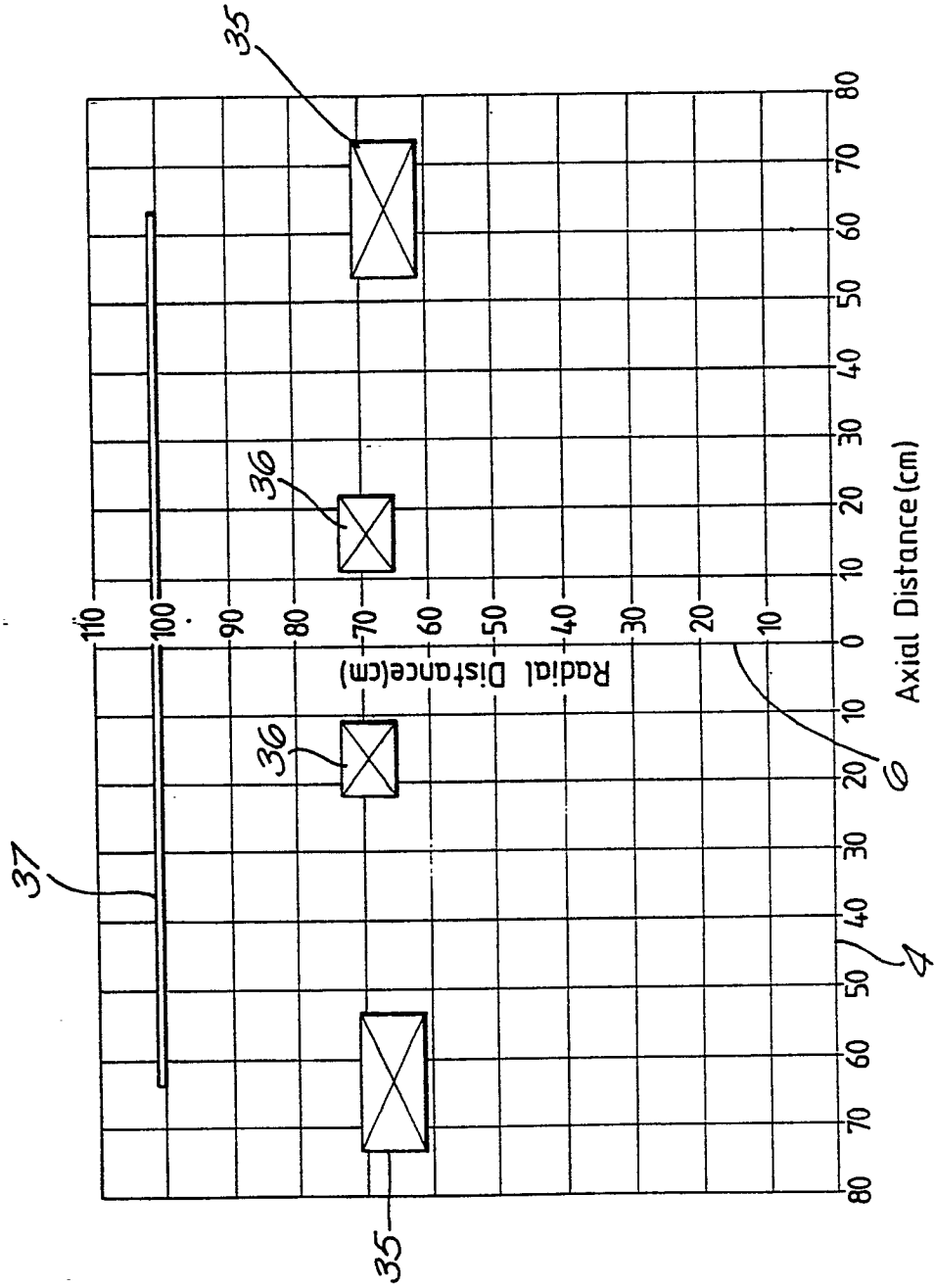


Fig. 6A.

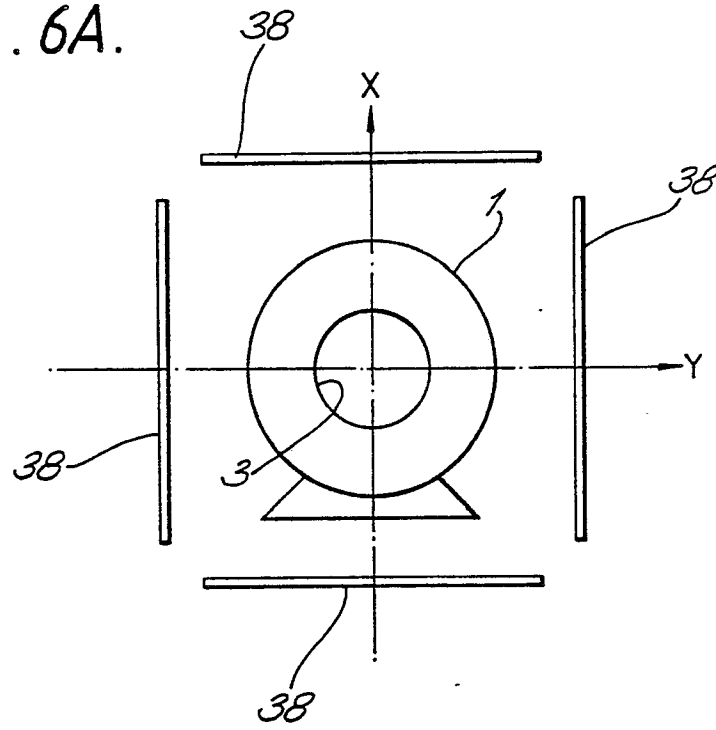
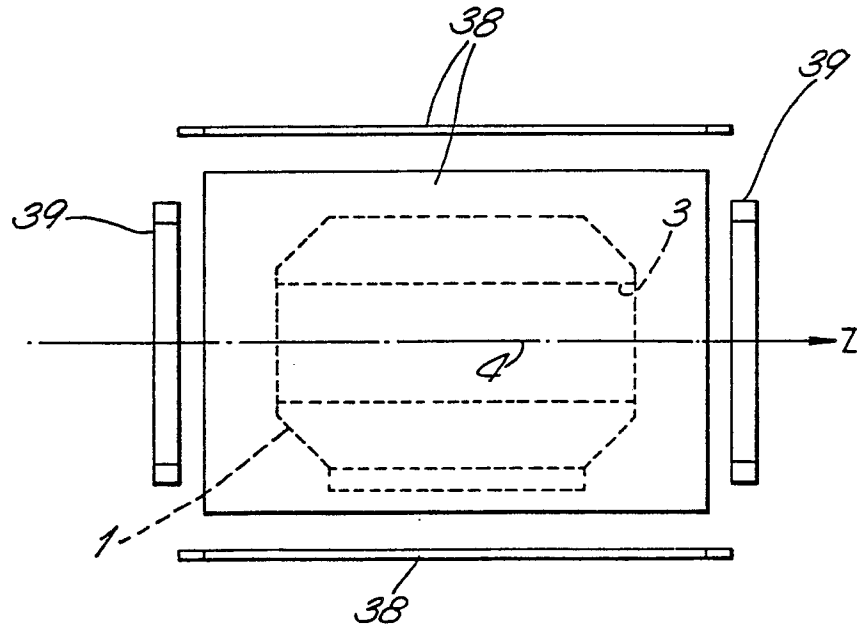


Fig. 6B.



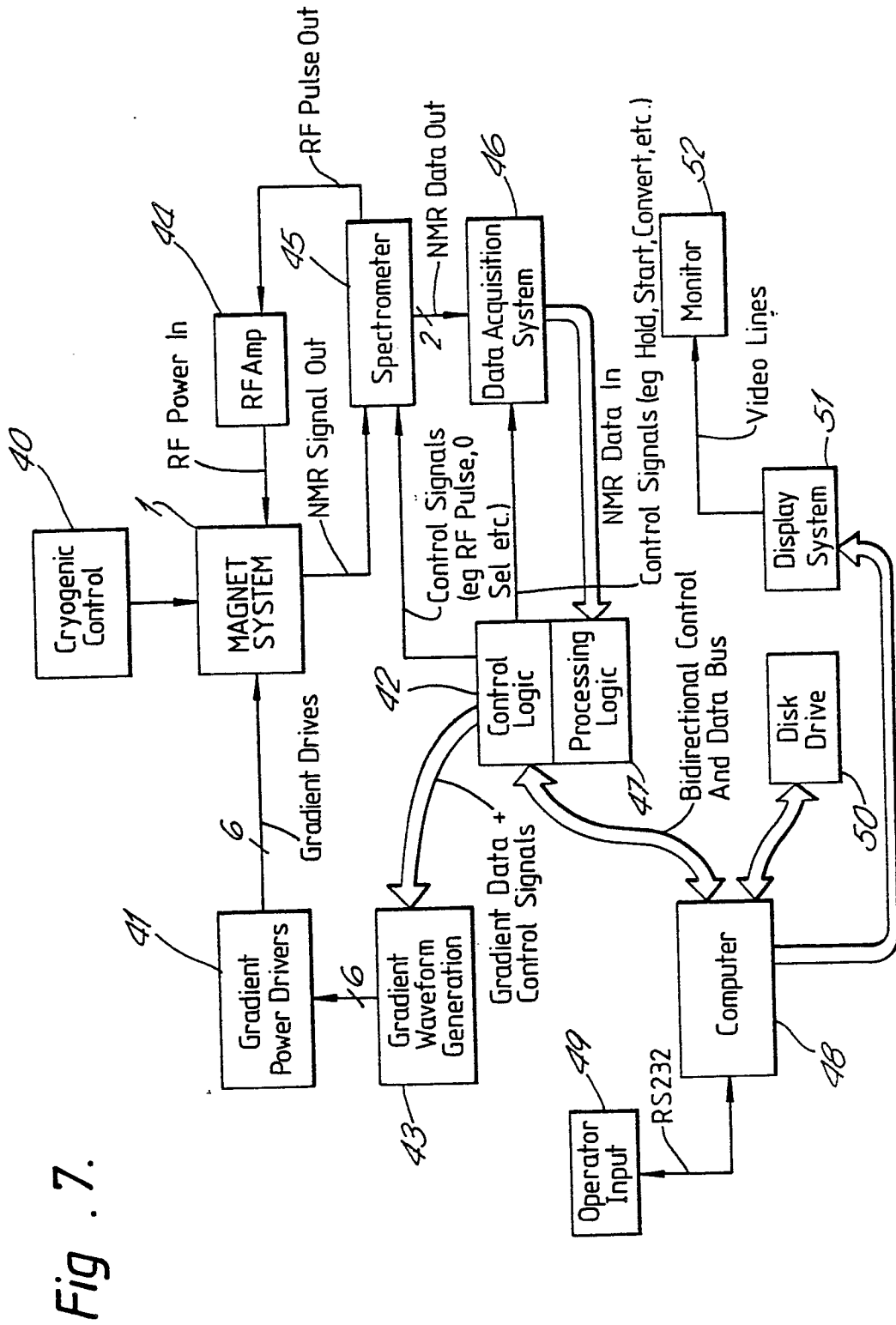


Fig . 7.